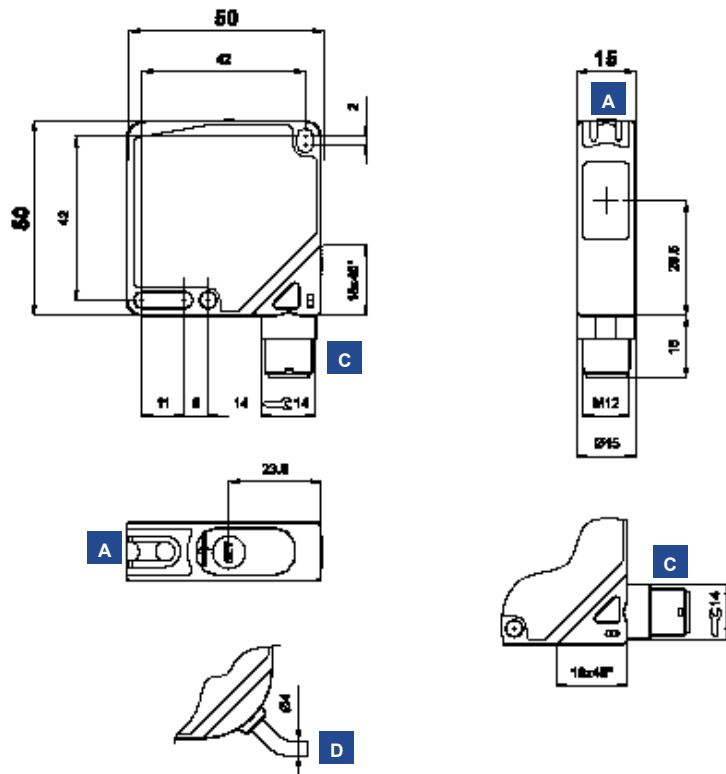


# U LUMINESCENCE SENSOR WITH UV EMISSION

The UV light LED emission detects any luminescent reference, even on very reflective surfaces, such as ceramics, metal or mirrored glass. The patent-covered *EASYtouch™* setting procedures fixes automatically the best detection conditions, simply by pressing the teach-in push-button once, with the reference to detect. The threshold between two different luminescence degrees can be set by a second pressure of the button



## DIMENSIONS



## INDICATORS AND SETTINGS



- A** Output status and READY/ERROR LEDs
- B** Teach-in push-button
- C** M12 connector output orientable in two positions
- D** Cable output

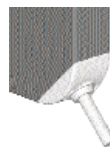
Teach-in button for setting.  
*EASYtouch™* provides two setting modes: standard or fine.  
 Please refer to instructions manual for operating details.

## ACCESSORIES

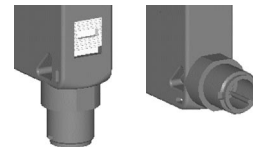
For **dedicated accessories** refer to the **ACCESSORIES** section of this catalogue.

Refer also to **Connectors (A.03)** and **Fixing Brackets (A.04)** of the **General Catalogue**

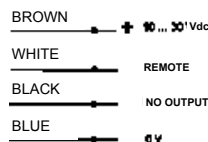
## CONNECTIONS



**S60-PA-2**



**S60-PA-5**





## TECHNICAL DATA

	S60-PA-2-U08-NH	S60-PA-2-U08-PH	S60-PA-5-U08-NH	S60-PA-5-U08-PH
<b>Operating distance:</b>	0 ... 40 mm			
<b>Power supply :</b>	10 ... 30 Vdc <sup>1</sup>			
<b>Ripple:</b>	≤ 2 Vpp			
<b>Consumption:</b>	≤ 30 mA			
<b>Light emission:</b>	LED UV 370 nm <sup>2</sup>			
<b>Spot dimension:</b>	approx. 1.5 mm at 10 mm (max. signal)			
<b>Resolution:</b>	0.5 mm			
<b>Setting:</b>	teach-in push-button			
	remote on cable <sup>3</sup>			
<b>Setting procedure:</b>	EASYtouch™			
<b>Indicators:</b>	yellow OUTPUT LED			
	green / red READY / ERROR LED			
<b>Output type:</b>	PNP, NO			
	NPN, NO			
<b>Output current:</b>	≤ 100 mA			
<b>Saturation voltage:</b>	≤ 2 V			
<b>Response time:</b>	250 μs			
<b>Max. switching frequency:</b>	2 kHz			
<b>Operating mode:</b>	light with EASYtouch™			
	automatic dark / light with fine acquisition			
<b>Timing function:</b>	20 ms minimum output ON			
<b>Auxiliary functions:</b>	remote			
	keylock <sup>4</sup>			
<b>Connection:</b>	2 m Ø 4 mm cable <sup>5</sup>			
	M12 4-pole connector <sup>6</sup>			
<b>Electrical protection:</b>	class 2			
<b>Mechanical protection:</b>	IP67			
<b>Protection devices:</b>	A, B <sup>7</sup>			
<b>Housing material:</b>	ABS			
<b>Lens material:</b>	window in glass (tilted anti-reflection) <sup>8</sup>			
<b>Weight:</b>	90 g max.			
	40 g max.			
<b>Operating temperature:</b>	-25 ... +55 C			
<b>Storage temperature:</b>	-25 ... +70 C			
<b>Reference standard:</b>	EN 60947-5-2			

## SELECTION TABLE

### luminescence sensor - 2 m cable

S60-PA-2-U08-NH	956201540	NPN
S60-PA-2-U08-PH	956201390	PNP

### luminescence sensor - M12 connector

S60-PA-5-U08-NH	956201010	NPN
S60-PA-5-U08-PH	956201000	PNP

All the ordering codes and information are summarised in the last pages of this catalogue

## TECHNICAL NOTES

<sup>1</sup> Limit values

<sup>2</sup> Average life of 100.000 h with  $T_A = +25 \text{ }^\circ\text{C}$

<sup>3</sup> Connect to 0 V when remote wire not used

<sup>4</sup> Active with remote at +Vdc at power on

<sup>5</sup> PVC, 4 x 0.14 mm<sup>2</sup>

<sup>6</sup> Connector can be blocked on two positions

<sup>7</sup> A - reverse polarity protection

B - overload and short-circuit protection

<sup>8</sup> Internal lenses in glass



## DETECTION DIAGRAMS

