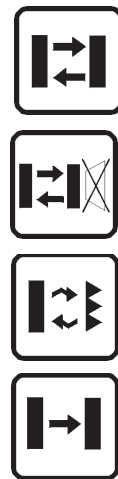


LONG DISTANCE SENSORS



- *Enhanced emission and special lenses ideal for long operating distances*
- *µP Teach-in setting for background suppression*
- *Orientable cable or M12 connection*
- *Impermeable, compact and resistant plastic housing*

S20 SERIES

The **S20** series offers all the basic optic functions at the highest operating distances. The series presents models with 50 cm background suppression with microprocessor-based Teach-in setting or, with trimmer adjustment, 10 m polarised retroreflex, 2 m diffuse proximity and 50 m emitter-receiver optic functions.

Even with particularly compact dimensions, these sensors guarantee optimal performances, thanks to special aspherical lenses that take full advantage of the high-power LED emission, visible red in the background suppression and polarised retroreflex versions and infrared in all the other models.

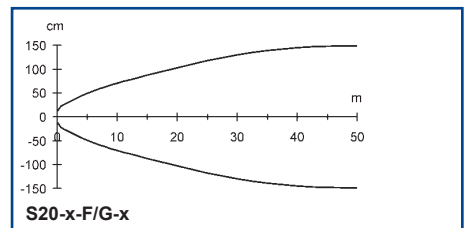
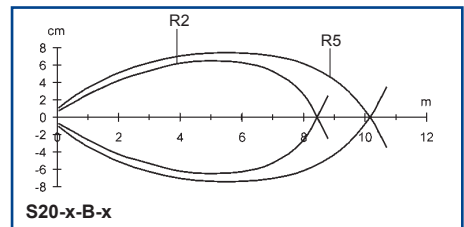
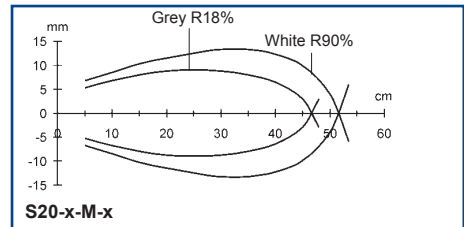
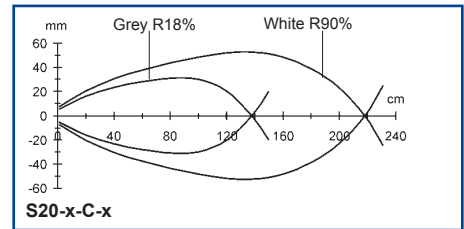
Both NO and NC outputs are present in the NPN or PNP versions; cable or M12 connection is available.

The connection block can be adjusted either in a straight or right angle position, in order to offer improved mounting versatility.

TECHNICAL DATA

Power supply:	10 ... 30 Vdc, reverse polarity protection
Consumption:	50 mA max.
Light emission:	red LED 660 nm (B, M vers.) infrared LED 880 nm (C, F/G vers.)
Diffuse proximity operating distance:	1... 200 cm
Background suppression op. distance:	10 ... 50 cm
Polarised retroreflex operating distance: ..	0.1 ... 7 m (on R2)
Through beam operating distance:	0.1 ... 50 m
Setting:	sensitivity trimmer (B, C, F vers.) SET push-button (M vers.)
Indicators:	yellow OUTPUT LED green STABILITY LED (B, C, F vers.) green READY LED (M vers.) red ALARM LED (M vers.)
Output type:	NO-NC NPN or PNP, open collector
Saturation voltage:	1 V max. (NPN vers.) 2 V max. (PNP vers.)
Output current:	200 mA max., short-circuit protection
Response time:	1 ms max.
Switching frequency:	500 Hz max.
Connection:	4-pole M12 connector 2 m Ø 5 mm cable
Electrical protection:	class 2
Mechanical protection:	IP66
Housing material:	ABS
Lens material:	PMMA plastic
Weight:	50 g max. (connector vers.) 130 g max. (cable vers.)
Operating temperature:	-25 ... +55°C -10 ... +55°C (M vers.)
Storage temperature:	-25 ... +70°C
Reference standard:	EN 60947-5-2
Certifications:	CE cULUS

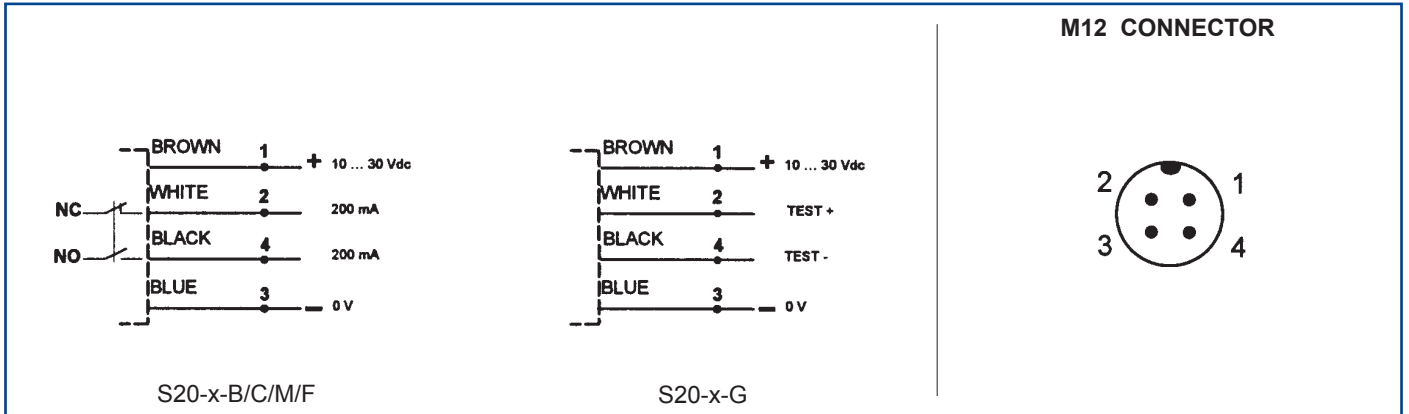
DETECTION DIAGRAMS



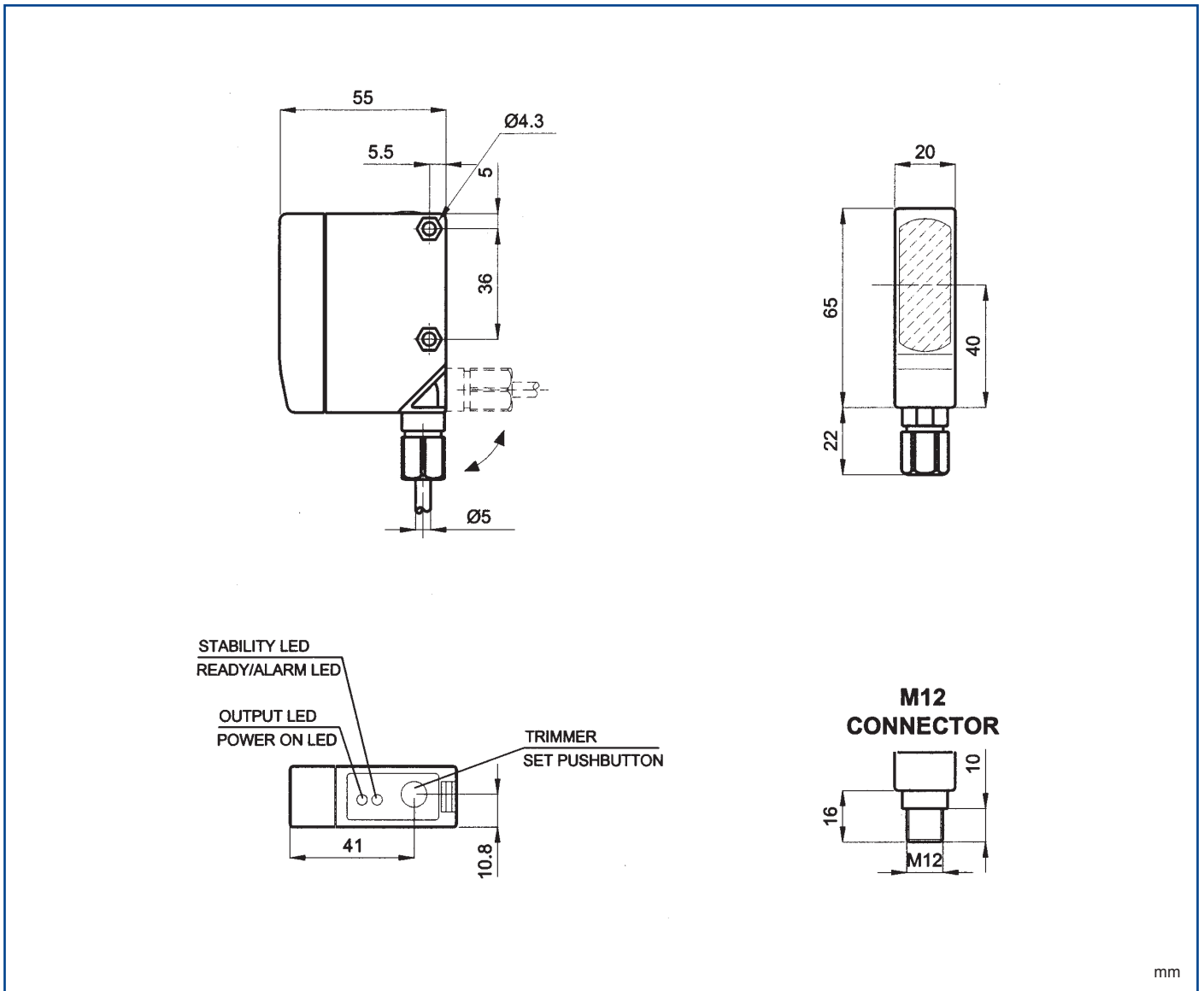
The operating distances indicate the detection distance with excess gain 2.

The detection diagrams indicate the typical operating distance with excess gain 1.

CONNECTIONS



DIMENSIONS



MODELS

MODEL	OPTIC FUNCTION	CONNECTION	OUTPUT	CODE N°
S20-2-C-P	diffuse proximity	2 m cable	PNP	951351010
S20-2-C-N	diffuse proximity	2 m cable	NPN	951351060
S20-5-C-P	diffuse proximity	M12 connector	PNP	951351110
S20-5-C-N	diffuse proximity	M12 connector	NPN	951351160
S20-2-M-P	background suppression	2 m cable	PNP	951351020
S20-2-M-N	background suppression	2 m cable	NPN	951351070
S20-5-M-P	background suppression	M12 connector	PNP	951351120
S20-5-M-N	background suppression	M12 connector	NPN	951351170
S20-2-B-P	polarised retroreflex	2 m cable	PNP	951351000
S20-2-B-N	polarised retroreflex	2 m cable	NPN	951351050
S20-5-B-P	polarised retroreflex	M12 connector	PNP	951351100
S20-5-B-N	polarised retroreflex	M12 connector	NPN	951351150
S20-2-F-P	receiver	2 m cable	PNP	951351030
S20-2-F-N	receiver	2 m cable	NPN	951351080
S20-5-F-P	receiver	M12 connector	PNP	951351130
S20-5-F-N	receiver	M12 connector	NPN	951351180
S20-2-G	emitter	2 m cable	-	951351040
S20-5-G	emitter	M12 connector	-	951351140

ACCESSORIES

MODEL	DESCRIPTION	CODE N°
ST-164	1 pc fixing bracket	95ACC1340

Please refer also to **Sensor Accessories**

Distributed by:

HEADQUARTERS

DATASENSOR SpA

via Lavino, 265 - 40050 Monte San Pietro, BO - Italy

Tel. +39 051/6765611 • Fax +39 051/6759324

www.datasensor.com • e-mail info@datasensor.com

Datasensor SpA endeavours to continuously improve and renew its products; for this reason the technical data and contents of this catalogue may undergo variations without prior notice. For correct installation and use Datasensor SpA can guarantee only the data indicated in the instruction manual supplied with the products.